



WHAT TO KNOW ABOUT **PRUNING SERVICES**

SAFETY AND PROFESSIONALISM

- Minor pruning will be conducted around your service line during routine maintenance.
- We employ arborists certified by the International Society of Arboriculture to manage our tree program.
- Our vegetation management program is based on industry pruning best practices.
- MidAmerican Energy has been recognized as a Tree Line USA utility by the Arbor Day Foundation and the Iowa Department of Natural Resources since 2001.
- When you need to work near a service line on your property, MidAmerican Energy will assist in safe disconnection of service.

REQUIRED PRUNING SERVICES

Pruning trees around power lines eliminates safety hazards to keep you safe, and decrease potential electrical service disruptions.

Pruning is required when branches grow near power lines for a variety of reasons:

- Branches growing close to electrical lines or equipment can break and interrupt service in windy conditions.
- Trees near power lines are dangerous to anyone climbing them.
- Fast growing trees require greater clearance than slow growing trees.
- Any time tree growth threatens the safety or reliability of service.

PRUNING ACCORDING TO BEST PRACTICES

We follow natural pruning best practices. Natural pruning is removing a limb to the point where it grows from the tree – this is called a node.

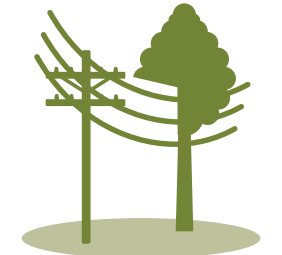
- Making cuts at the node protects the tree naturally and prevents decay. While the node may seem far from power lines, cutting there allows the tree to heal naturally and block out diseases.
- Limbs not cut at the node pose hazards like decay and watersprouts or suckers. Watersprouts can easily break during storms, posing further risks.



If only one side of your tree has been pruned, don't be concerned about its stability. Trees are balanced and anchored by extensive underground root systems. Removing healthy limbs from the other side of the tree to balance out curb appeal can jeopardize the health of the tree.



DECIDUOUS DIRECTIONAL PRUNING
Branches are left to grow away from wires.



EVERGREEN SIDE PRUNING
Side branches are trimmed to the branch collar of the trunk.

DEBRIS REMOVAL

During scheduled pruning activities MidAmerican Energy crews will cut and remove debris. Stumps will be cut close to the ground and treated. Mulch and wood can be left, upon request.

When you request pruning services, all debris will be left. Major work, like dead tree removal, is the responsibility of the property owner.

When clearing storm-damaged limbs, all debris is left. Consult your city or county vegetation management program for debris removal following severe weather events.

Pruning near power lines is dangerous and should only be completed by qualified professionals. If your qualified arborist needs to work on trees near power lines or equipment, call 888-427-5632 and a utility arborist will inspect the tree to make the area safe.

PLAN

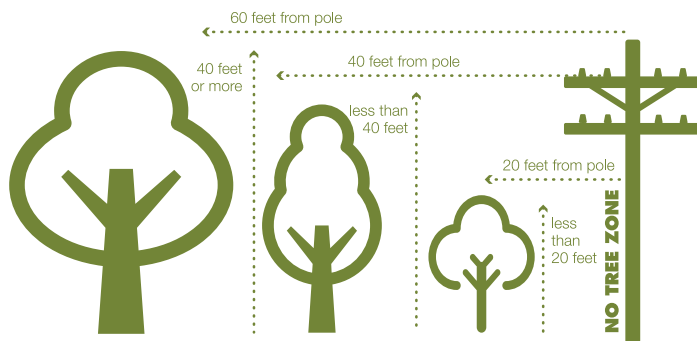
Before planting trees on your property, call 811. By law, you must call 811 to have underground utilities marked two full working days before digging.

Next, look around and look up to check for power lines and utility boxes. Plan to plant trees a safe distance away from power lines or utility boxes. Consider how big the tree will grow as it matures before deciding where to plant it. If you do not know how large a tree will grow consult your local tree farm, landscaper, arborist, or cooperative extension service for assistance.

PLANT

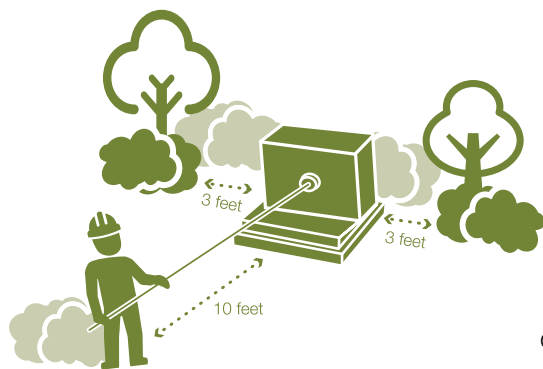
Use these guidelines to plant trees a safe distance away from power lines:

- > **Small trees** (under 20 feet at maturity) – These are the only trees that are safe to plant within 20 feet of a power line pole.
- > **Medium trees** (between 25-40 feet at maturity) – These should be planted over 40 feet away from a power line pole.
- > **Large trees** (40 feet or larger at maturity) – These should be planted over 60 feet away from a power line pole.



KEEP ACCESS TO TRANSFORMERS CLEAR

Transformers are green metal utility boxes mounted on a small concrete or fiberglass pad in your neighborhood. To allow our crews space to work inside these transformers, do not plant shrubs or trees within 10 feet of the front and 3 feet of the sides of the box.



PRUNE

We provide pruning services to keep lines clear as part of your electrical service at no additional cost.

MidAmerican Energy will notify you with a letter or an automated phone call before tree pruning begins in your area. If branches are already touching or close to power lines, we may need to enter the property quickly without advance notice. Tariffs and franchise agreements filed with your state utility board allow us to access our power lines for maintenance activities.

BOTTOM LINE

Proper planning, planting and pruning creates healthy, beautiful trees, and decreases the potential for service disruption in your neighborhood.



Pruning information
888-427-5632
trees@MidAmerican.com



Power out
800-799-4443



Gas leak
800-595-5325



Before planting, call 811 to have underground utilities marked

Know what's below.
Call before you dig.

PLAN, PLANT AND PRUNE TREES

TO PREVENT INTERFERENCE
WITH POWER LINES

